

Travel Pocket Guide

24-26 August 2020
National Exhibition and Convention Center (Shanghai), China



Content

Page

03

Show Information



Page

12

Official Carrier
& Partner Airlines



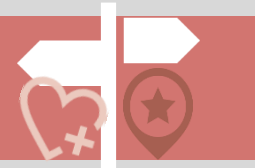
04

Visa Invitation Letter



13

Attractions



05

Transportation to Venue



15

Useful Phrases



07

Official Hotel List
& Travel Agent



16

Useful Information





24 – 26 August 2020

Show Name Intertextile Shanghai Home Textiles – Autumn Edition 2020
2020 中国国际家用纺织品及辅料 (秋冬) 博览会

Website <https://intertextile-shanghai-hometextiles-autumn.hk.messefrankfurt.com/shanghai/en.html>

Venue National Exhibition and Convention Center (Shanghai) – NECC (SH)
Tel: +86 21 6700 8888
Fax: +86 21 6700 8877
West Entrance: 1888 Zhuguang Road, Shanghai, China
(connected with Metro Line 2 exit)
South Entrance: 168 Yinggang East Road, Shanghai, China
North Entrance: 333 Songze Avenue Road, Shanghai, China

国家会展中心(上海)
总机: +86 21 6700 8888
传真: +86 21 6700 8877
西门: 中国上海诸光路1888号
南门: 中国上海盈港东路168号
北门: 中国上海崧泽大道333号

Opening Hours

24 August 2020 (Monday)	9:00am – 6:00pm
25 August 2020 (Tuesday)	9:00am – 6:00pm
26 August 2020 (Wednesday)	9:00am – 6:00pm

Free of charge for trade visitors only.
Persons under 18 will not be admitted.

All foreign exhibitors and visitors to PR China must apply for visa and comply with the health requirement on entering into China. Please ensure that all your colleagues and companions have already obtained the relevant visa prior to departure.

Visitor

Please contact our official travel agency for more details and cost for visa invitation letter:

Official Travel Agent:
Shanghai Vision Expo & Meeting Solutions Co., Ltd.
Contact person: Ms. Jenny Zhang / Mr. Billy Xu
Tel: 86 (21) 5481 6051 / 5481 6052
Fax: 86 (21) 5481 6032
Email: jenny@shanghai-vision.com / billy@shanghai-vision.com
Address: Unit 703, New Caohejing Building, 509 Caobao Road, Shanghai 200233, China

Exhibitor

Please contact the organiser for more information of the visa invitation letter



Transportation to Venue

Air

From the Hongqiao Airport (Terminal 2)

- Approximately 5 km
- Taxi: About 15 minutes
- Metro: Take Line 2 and get off at Xujingdong/ East Xujing Metro Station (徐泾东站)

From Pudong International Airport

- Approximately 60 km
- Taxi: About 90 minutes
- Metro: Take Line 2 and get off at Xujingdong/ East Xujing Metro Station (徐泾东站)

Metro

Take Line 2 and get off at Xujingdong/Xujing East Station (徐泾东站)



Railway

From Shanghai Hongqiao Railway Station

- Approximately 3 km
- Metro: Take Line 2 and get off at Xujingdong/East Xujing Metro Station (徐泾东站)

From Shanghai Railway Station

- Approximately 25 km
- Metro: Take Line 1 to Renminguangchang/People's Square Station (人民广场), change to Line 2 and get off at Xujingdong/East Xujing Metro Station (徐泾东站)

From Shanghai South Railway Station

- Approximately 23 km
- Metro: Take Line 1 to Renminguangchang/People's Square Station (人民广场), change to Line 2 and get off at Xujingdong/East Xujing Metro Station (徐泾东站)

Taxi

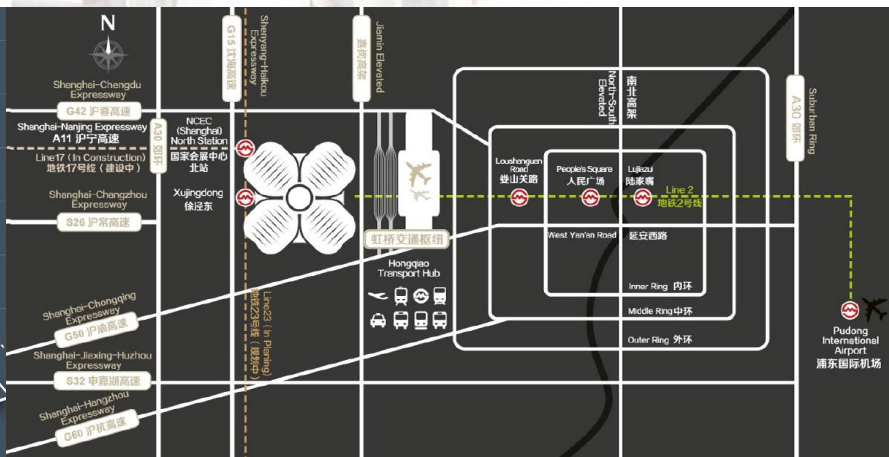
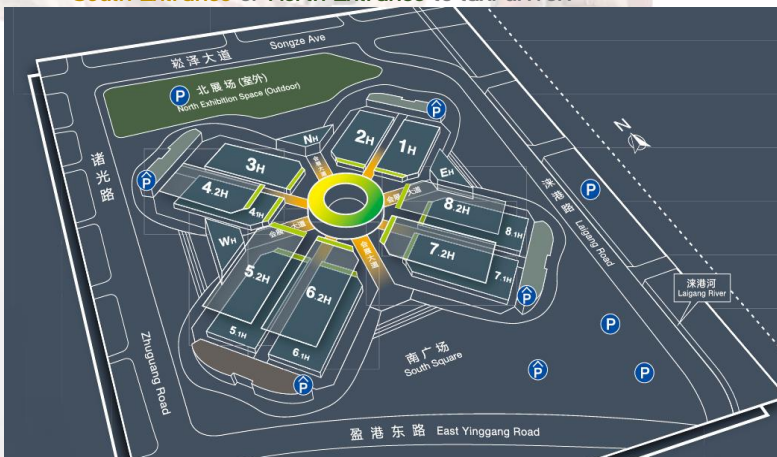
Please show the Chinese address of venue's **South Entrance** or **North Entrance** to taxi driver:

South Entrance:

请带我去:
国家会展中心(上海)南门
中国上海盈港东路168号

North Entrance:

请带我去:
国家会展中心(上海)北门
中国上海崧泽大道333号





Official Hotel List

1. InterContinental Shanghai NECC



Located in the heart of Shanghai Hongqiao CBD, the hotel is the only luxury hotel in the dazzling National Exhibition and Convention Center (Shanghai). The hotel is just 8 kilometers from Hongqiao International Airport and adjacent to the Hongqiao transportation hub. It is also just steps away from Metro Line 2, which is connecting guests to all of Shanghai's commercial districts. The hotel features 536 contemporary guestrooms, four eclectic restaurants and lounges, a luxury spa and an indoor pool.

📍 1700 Zhuguang Road, Shanghai
Distance to NECC: 5 mins on walk
Drive distance to Pudong Int'l Airport: 60 mins
Drive distance to Hongqiao Int'l Airport: 25 mins



2. Sofitel Shanghai Hongqiao



Located just minutes from the NECC convention center and 5 minutes from the Hongqiao transport hub, Sofitel Shanghai Hongqiao is a Parisian inspired inner city oasis featuring 354 opulent guest rooms and suites with our signature Sofitel MyBed. An exciting gastronomy experience awaits with our 3 restaurants and 2 bars. Rejuvenate in our SoSPA, work up a sweat at SoFIT wellness center or have a meeting in one of our modern function rooms.

📍 666 Taihong Road, Shanghai
Distance to NECC: 7 mins by taxi
Drive distance to Pudong Int'l Airport: 60 mins
Drive distance to Hongqiao Int'l Airport: 10 mins



3. Hotel Indigo Shanghai Hongqiao



Located in the core center of Hongqiao CBD area, besides Hongqiao Transportation Hub and National Exhibition and Convention Center. The design of the hotel is inspired by the business tycoons in last century, expressed by knolling artwork in guest room, shows the legendary life of these tycoons. Integrating modern villa style and immersive game elements make the hotel more fun. A perfect balance between the business and leisure life of fashion travelers and social butterflies. The hotel is designed by HBA company, with total 227 rooms of 41-180m², decorated with brave elegant malachite green and French window to extend the visual room size.

📍 No.43 Lane 188 Yonghong Road, Shanghai
Distance to NECC: 10 mins by taxi
Drive distance to Pudong Int'l Airport: 60 mins
Drive distance to Hongqiao Int'l Airport: 10 mins



4. Renaissance Yangtze Shanghai Hotel



Located in the heart of Hongqiao, an upscale business district, it is your home away from home. For meetings and conferences, the hotel offers 22 stylish function rooms, all equipped with the latest meeting solutions technology including a Grand Ballroom. Be it for business or pleasure, the hotel offers an impressive array of first-class facilities and inventive catering solutions. With 5 award-winning restaurants and 2 lounges, indulge yourself with gastronomic temptations ranging from classical Chinese cuisine to modern Western fusion.

📍 2099 Yan'an Xi Road, Shanghai
Distance to NECC: 35 mins by taxi
Drive distance to Pudong Int'l Airport: 60 mins
Drive distance to Hongqiao Int'l Airport: 30 mins



5. Courtyard by Marriott Hongqiao



Located in the west side of Hongqiao CBD, it is situated adjacent to the NECC in short distance, hotel shuttle service is available to exhibition guests. For public transportation, East Xujing Station, terminus station for Metro Line 2 is nearby, linking visitors directly to People's Square, Lujiazui Financial District, as well as Pudong International Airport. With so much easy access to the rest of the country and the world, it is safe to say Hongqiao has the potential to blossom into a world-class business center.

📍 333 Panwen Road, Shanghai
Distance to NECC: 5 mins by taxi
Drive distance to Pudong Int'l Airport: 60 mins
Drive distance to Hongqiao Int'l Airport: 25 mins



6. Hyatt Place Shanghai Hongqiao CBD



Located in the heart of Shanghai Hongqiao CBD with just steps away from NECC(Shanghai) and Hongqiao Transportation Hub combining Hongqiao Int'l Airport, High-speed railways, Metro Line 2 and 10, ground buses and taxis. It provides 252 ultramodern guest rooms with ideal accommodations for anyone visiting Shanghai, whether it is for business or leisure. It's a perfect place to host your executive meetings, family parties, event dinners and more, features your choice of residential-like suite or spacious studio hotel rooms, which are ideal for busy professionals, project teams and family travelers who don't want to sacrifice the comforts of home.

📍 9 Shenhong road, Shanghai
Distance to NECC: 7 mins by taxi
Drive distance to Pudong Int'l Airport: 70 mins
Drive distance to Hongqiao Int'l Airport: 15 mins





Official Hotel List

7. Howard Johnson Hongqiao Airport Hotel



Located just opposite to Hongqiao Int'l Airport Terminal 2. Offer a range of rooms which furnished and designed in a classy, yet modern fashion, including free Wi-Fi and free continental breakfast. Onsite restaurants serve Western and Asian dishes, which specializes in Cantonese cuisine and seafood dishes and respective cuisine. When guests want to take a break from their busy schedule, they can take advantage of the gym for a little exercise or go to the spa or salon to be pampered.

📍 1989 Huaxiang Road, Shanghai
Distance to NECC: 10 mins by taxi
Drive distance to Pudong Int'l Airport: 70 mins
Drive distance to Hongqiao Int'l Airport: 10 mins

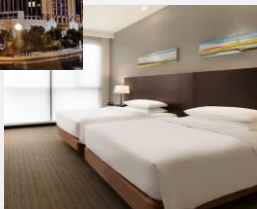
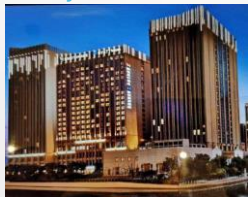
8. Shama Hongqiao Shanghai



Opened in 2018 to offer travelers a pleasant stay in Shanghai, whether for business or leisure purposes. Conveniently located just 4km from Hongqiao Int'l Airport and 5km from Shanghai Hongqiao Railway Station, and located near many of Shanghai's attractions including NECC, Huacao Park and Lingkong SOHO. After a long day of sightseeing, guests can retire to the comfort at the hotel. Airport pickup can be arranged by the hotel upon request, and onsite parking is provided. If cleanliness is important to you, this hotel makes an excellent choice, as our guests consider this to be one of the cleanest hotels in the city.

📍 No.8 Lane 929, Shenhong Road, Shanghai
Distance to NECC: 15 mins by taxi
Drive distance to Pudong Int'l Airport: 75 mins
Drive distance to Hongqiao Int'l Airport: 15 mins

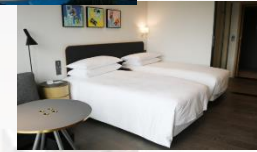
9. Hyatt Place Shanghai New Hongqiao



Recently opened in 2017, located only 12km from Hongqiao Int'l Airport and 13km from Shanghai Hongqiao Railway Station, giving guests a number of convenient transportation options. At the end of a busy day, travelers can unwind and relax in the hotel or go out and enjoy the city. Pickup service can be booked and Airport pickup can be arranged by the hotel upon request, guests can also make use of the parking facilities. Our guests rate this hotel as one of the best hotels for cleanliness. Perfect for those working on the move, this hotel caters to a large number of business guests.

📍 Lane 2799, Huqingping Road, Shanghai
Distance to NECC: 25 mins by taxi
Drive distance to Pudong Int'l Airport: 75 mins
Drive distance to Hongqiao Int'l Airport: 25 mins

10. Artyzen Habitat Hongqiao Shanghai



Recently opened in 2018, a great choice for guests looking for accommodation in Shanghai with convenient transportation, Hongqiao International Airport just 7 km away and Hongqiao Railway Station only 9 km away. The closest metro station (Zi Teng Metro Station), is only 1 km away. Famous attractions Qibao Old Street and Shanghai Zoo are just a short taxi ride away. After a long day of sightseeing, guests can retire to the comfort of the hotel with free in-room WiFi. A pickup service can be arranged for guests upon request. This Shanghai hotel offers parking on site. Our guests rate this hotel as one of the best hotels for cleanliness.

📍 3999-5 Hongxin Road, Shanghai
Distance to NECC: 30 mins by taxi
Drive distance to Pudong Int'l Airport: 70 mins
Drive distance to Hongqiao Int'l Airport: 30 mins

11. Grand Mercure Hongqiao Shanghai



Located in the center of Shanghai's western Hongqiao District, in between stations of Metro Lines 2 and 10. Guestrooms offer microwaves, satellite flatscreen TVs, minibars and inroom safes, also come with fully-equipped kitchens or kitchenettes as well as balconies. Guest could find Cantonese cuisine, international cuisine, French fusion and a hand-picked selection of wines, cocktails and seasonal drink in the hotel. A fitness center, massage center and sauna are also available for guests looking to unwind.

📍 369 Xianxia Road, Shanghai
Distance to NECC: 35 mins by taxi
Drive distance to Pudong Int'l Airport: 60 mins
Drive distance to Hongqiao Int'l Airport: 30 mins

12. Golden Tulip Shanghai Rainbow



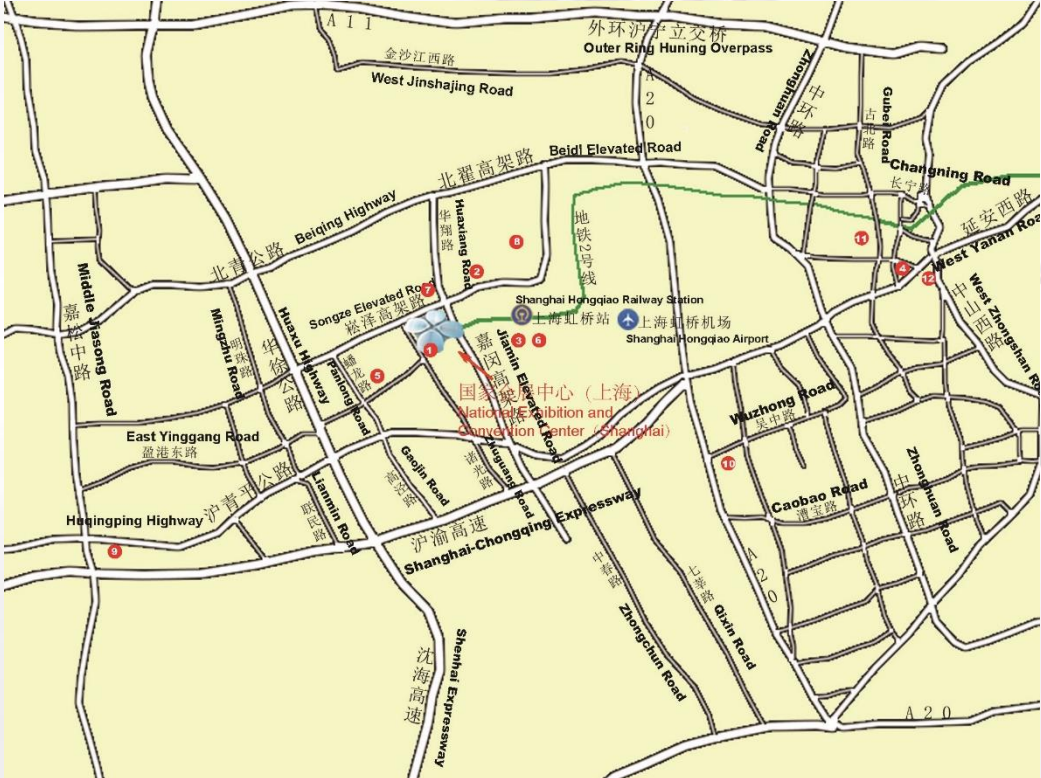
"PLAYTIME. ANYTIME" featuring here a new brand positioning delivering the concept of playful outlook on life, work and travel enriched by local culture. Located in the business hub of Hongqiao Development zone, adjacent to the International Trade Center & Shanghai Mart, close to the inner express way and Yan' an road express way. There are several traffic main roads and subway No.3/4 are nearby. Many business office buildings, shopping centers, restaurants and entertainments are located in the area. This contemporary new look hotel is set in a 30-floor
📍 No.2000 Yan'an West Road Shanghai
Distance to NECC: 35 mins by taxi
Drive distance to Pudong Int'l Airport: 60 mins
Drive distance to Hongqiao Int'l Airport: 30 mins



Official Travel Agent: Shanghai Vision Expo & Meeting Solutions Co Ltd
Contact person: Ms. Jenny Zhang / Mr. Billy Xu
Tel.: 86 (21) 5481 6051 / 5481 6052
Fax: 86 (21) 5481 6032
Email: jenny@shanghai-vision.com / billy@shanghai-vision.com

* You may contact the official travel agent for reservation at special rate, or click [HERE](#) for more information.
 * Please refer to below map for the location of 12 official hotels.

Hotel Location Map



Official Carrier



Cathay Pacific, the home carrier of Hong Kong, together with Cathay Dragon, offer registered exhibitors, buyers and travel companions an exclusive opportunity to enjoy great savings on flights to Shanghai.

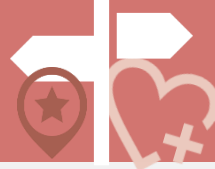
[Book online](#) and reserve with MICE Event Code "**MICE345**" or contact your nearest [Cathay Pacific](#) and [Cathay Dragon](#) reservations office and quote the event code to receive this offer.

Partner Airlines



To make a reservation, please click on [here](#) and enter the access code **DEZLIPE** in the "Offer for discounted flights" area. This will open an online booking platform that will automatically calculate the discount offered or provide you with an even better offer if another promotional fare is available.





The Bund 上海外滩



Zhongshan East 1st Road, Huangpu Qu

A symbol of Shanghai and an epitome of Shanghai's modern history. On one side of the broad highway stand 52 blocks of tall, magnificent buildings with different architectural styles, which can be called a museum of modern world architecture. On the other side is the wide embankment, where crowds of visitors come to enjoy the beautiful scenery on the Huangpu – mother river of Shanghai. When night falls, colorful lights illuminate the whole bund area and turn it into a scene of the "wonderland".

Huangpu River Cruise Dock 黄浦江游览



Headstreams from Dianshan Lake, Zhujiujiao Town, Qingpu District,

The River cruise is an important traditional tourist item in Shanghai. The Huangpu River is the mother river of Shanghai. It symbolizes Shanghai and presents visitors with the cream of the city's scenic sights on its banks. Here you will have a glimpse of Shanghai's past and look into the bright future of the city. Starting from the Bund the boat will bring you upstream to Nanpu Bridge, turn around downstream to the Yangpu Bridge and all the way to Wusong Mouth, where the river meets the Yangze River, and then turns back. The cruise company owns different kinds of cruise ships, wharves and a waiting lounge, offers boat trips to tourists.

Shanghai Disneyland Resort 上海迪士尼乐园



Huangzhao Rd, Chuanshaxinzen, Pudong New Area

Shanghai Disney Resort, the first Disney resort in Mainland China. The resort is home to the Shanghai Disneyland theme park, featuring seven lands, as well as two themed hotels – Shanghai Disneyland Hotel and Toy Story Hotel, Disneytown, a large shopping, dining and entertainment district, a Broadway-style theatre, Wishing Star Park and other outdoor recreation areas. Shanghai Disneyland is a Magic Kingdom-style theme park featuring classic Disney storytelling and characters but with authentic cultural touches and themes tailored specifically for the people of China. Shanghai Disney Resort offers something for everyone – thrilling adventures, lush gardens where guests can relax together, and enriching interactive experiences, all with the world-class guest service that Disney is known for around the globe.

Nanjing Road Pedestrian Walkway 南京街



Nanjing East Road, Huangpu District

Nanjing Rd, famed as "No.1 Street in China", is an epitome of Shanghai's history and culture. The 1,033m long Pedestrian Street lies between the Bund and the People's Square. There are 600 shops on both sides of the walkways, the 100-year old ones, famous-brand ones, specialty shops of different trades. It is a most complete display of the varieties and brands of commodities in China, even in Southeast Asia, meeting the needs of different strata of consumers.

Laowai Street 老外街



Lane 3338, Hongmei Road

Hongmei Pedestrian Street has recently been re-named Laowaijie 101 (Foreigner's Street 101). Laowai, a commonly used term for foreigners in China, bringing the message that "Shanghaiese people are open to laowai. We love the laowai in Shanghai, and it's a more brotherly way of calling people from abroad." Laowai Street with a total length of more than 400 meters and is one of Shanghai's most popular hubs for Western and international cuisine. It is a car-free street of bars and restaurants where you can enjoy cuisine from Italy, Germany, France, Thailand, India and a dozen other nations, providing different kinds of food and ambiance suitable for a romantic dinner or spending a lazy Sunday afternoon. The street will also invite international bands and performers to dance and play instruments on the street from time to time.

Yuyuan Old Street 豫园老街



Houjia Road, Fangbang Middle Road, Huangpu District

Yuyuan area is a must for all tourists in the country and from abroad. It still maintains the antique style of street of ancient Chinese towns, shops stand in rows with a large collection of beautiful commodities of a great variety, large numbers of visitors crowd the place. It is a commercial center combining shopping, touring, catering and entertainment in one. The buildings look antique in the exterior and are modernized in the interior, harmonized with the entire picture of the ancient town. There is a large collection of snack shops in the area, supplying different kinds of refreshment that can please customers' palate, much to their hearts' content. Besides, here, visitors can also get different native and special products and souvenirs. It is, therefore, a tourist area much appreciated by visitors from home and abroad.

Useful Phrases



English	Chinese	Putonghua
General		
How are you?	你好吗?	nǐ hǎo ma?
Good morning	早安	zǎo ān
Good afternoon	午安	wǔ ān
Good night	晚安	wǎn 'ān
Thank you	谢谢	xiè xie
Yes / No	是 / 不是	shì / bú shì
National Exhibition and Convention Center (Shanghai)	国家会展中心(上海)	guó jiā huì zhǎn zhōng xīn (shàng hǎi)
Take taxi	打的	dǎ dī
Bus	公车	gōng chē
Metro	地铁	dī tiě
Ferry	船	Chuán
How much is it?	多少钱	duō shǎo qián
Cheaper	便宜一点	pián yi yī diǎn
Toilet	洗手间	xǐ shǒu jiān
Restaurant		
Order, please	点菜	diǎn cài
Menu	菜单	cài dān
Check, please	请结帐	qǐng jié zhàng
Receipt, please	请给收据	qǐng gěi shōu jù
Water	水	shuǐ
Tea	茶	chá
Coffee	咖啡	kā fēi
Milk	牛奶	niú nǎi
Cream	奶油	nǎi yóu
Sugar	糖	táng
Salt	盐	yán
Pepper	胡椒粉	hú jiāo fěn
Bread	面包	miàn bāo
Soup	汤	tāng
Vegetable	菜	cài
Seafood	海鲜	hǎi xiān
Beef	牛肉	niú ròu
Chicken	鸡肉	jī ròu
Pork	猪肉	zhū ròu
Vegetarian	素菜	sù cài
Potato	土豆	tǔ dòu
Rice	米饭	mǐ fàn
Noodles	面条	miàn tiáo
Sweet	甜	tián
Sour	酸	suān
Bitter	苦	kǔ
Spicy	辣	là

Useful Information



Website	
Intertextile Shanghai Home Textiles	http://www.intertextilehome.com/
Venue – NECC(SH) Website	http://www.neccsh.com/cecsh/?lang=en
Shanghai Metro	service.shmetro.com/en
Shanghai attractions	www.travelchinaguide.com/cityguides/shanghai.htm
Shanghai restaurants	https://en.tripadvisor.com.hk/Restaurants-g308272-Shanghai.html
Tel	
Police	110
First-aid	120
Fire Ambulance	119
Traffic Accidents	122
Post Code Information	184
Weather Forecast	12121
Civil Aviation Inquiry	96990
Shanghai Tourist Hotline	962020
Phone Directory	114
Comprehensive Information	12580 / 118114
Railway Information	12306

Contact

Messe Frankfurt (HK) Ltd
 35/F, China Resources Building
 26 Harbour Road, Wanchai, Hong Kong
 Tel : +852 2802 7728
 Fax : +852 2598 8771
 Email : hometextile@hongkong.messefrankfurt.com



See you in Shanghai!

